



# APPRAISAL

The Steigerwaldt appraisal team has been a long-standing leader in the appraisal industry for over 45 years. Having multiple certified general appraisers and real estate experts, we strive to meet our clients varying real estate needs. The following lists include our primary real estate services suite.

**Our clients include timber investment and real estate organizations; forest product industries; conservation groups; nonprofit organizations; energy, utility, and transportation companies; federal, state, county, municipal, and tribal governments; attorneys and insurance companies; lenders; and private landowners.**

## APPRAISAL SERVICES

- Real Estate Appraisal
- Conservation Easement Appraisal
- Expert Witness Testimony
- Tree & Property Damage Appraisal
- Individual Tree Appraisal
- Eminent Domain Appraisal
- Christmas Tree Appraisal
- Appraisal Review

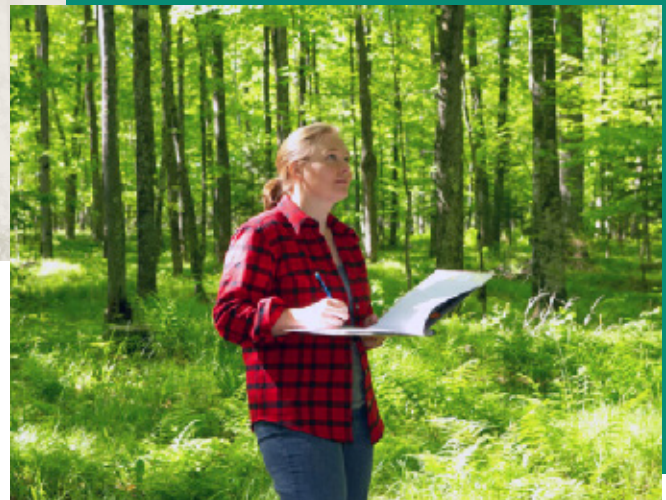
**We work on projects of all sizes in the Midwest and beyond, providing reliable expertise and depth of service. A few of our most recent clients and/or projects are highlighted below.**

### AMERICAN TRANSMISSION COMPANY (ATC)

- Badger Coulee Project – Completed over 175 “before and after” eminent domain appraisals in varying land classes in the southern half of Wisconsin over a five-year period for a new transmission line. Currently providing expert witness litigation work for this project
- J-88 Project – Completed 51 “before and after” appraisals in Marinette County, Wisconsin for a transmission line rebuild project
- Riverside Project – Completed 40 “before and after” appraisals in Rock County, Wisconsin for a new transmission line construction project

### CITY OF MARSHFIELD

- 11 appraisals (residential and commercial properties) for a public road improvement project in the City of Marshfield, Wisconsin



### LIQUEFIED PETROLEUM GAS (LPG) PROJECTS

*“Before and after” eminent domain appraisals*

- 13 appraisals of vacant tribal ownership in northwestern Wisconsin
- 6 appraisals of improved and vacant forestland and residential properties in Marquette County, Michigan
- 2 appraisals of encumbered agricultural properties in Monroe County, Wisconsin

## CONSERVATION EASEMENT APPRAISALS

- Upper Peninsula Land Conservancy – 4 appraisals of properties in Marquette and Iron Counties in Michigan
- Bayfield Regional Conservancy – 5 appraisals of varying properties in Bayfield County, Wisconsin
- WDNR – >12,000 acres CE appraisal accepted by WI Natural Resources Board

## TIMBER INVESTMENT APPRAISALS

- Completed many timber investment appraisals for conservation and non-conservation eased timber investment ownerships, totaling nearly 1.3 million acres nationwide.

## CHRISTMAS TREE APPRAISAL

- Inventoried and appraised 200,000 Christmas trees in central Wisconsin

## TREE DAMAGE APPRAISALS

- Whole sale nursery damage appraisal caused by chemical overspray in Portage County, Wisconsin
- Tree damage appraisal resulting from a timber trespass on a residential lot in Sawyer County, Wisconsin
- Real estate damage assessment resulting from fire damage, Marinette County, Wisconsin

# APPRAISAL TEAM



**Edward F. Steigerwaldt**  
Certified General Appraiser



**Lee A. Steigerwaldt**  
Certified General Appraiser



**Richard W. Congdon**  
Valuation Operations Manager



**Phil K. Jenkins**  
Project Manager



**Scott T. Zaremba**  
Certified General Appraiser



**Brenda L. Jones**  
Executive Assistant



**Andrea M. Caron**  
Appraisal Assistant



**Kayla J. VanRyen**  
Appraisal Assistant



**Scott A. Crum**  
Appraisal Specialist



**Michael D. Raichel**  
Appraisal Specialist



**Ben A. Nicholson**  
Appraisal Specialist



**Jennifer A. Hegnet**  
Appraisal Specialist/Tree  
Farm Field Manager

## STEIGERWALDT LAND SERVICES, INC.

856 North 4th Street Tomahawk, WI 54487

715-453-3274